

# MONTHLY MEMBERSHIP PROGRESS REPORT

LOCATION WISCONSIN

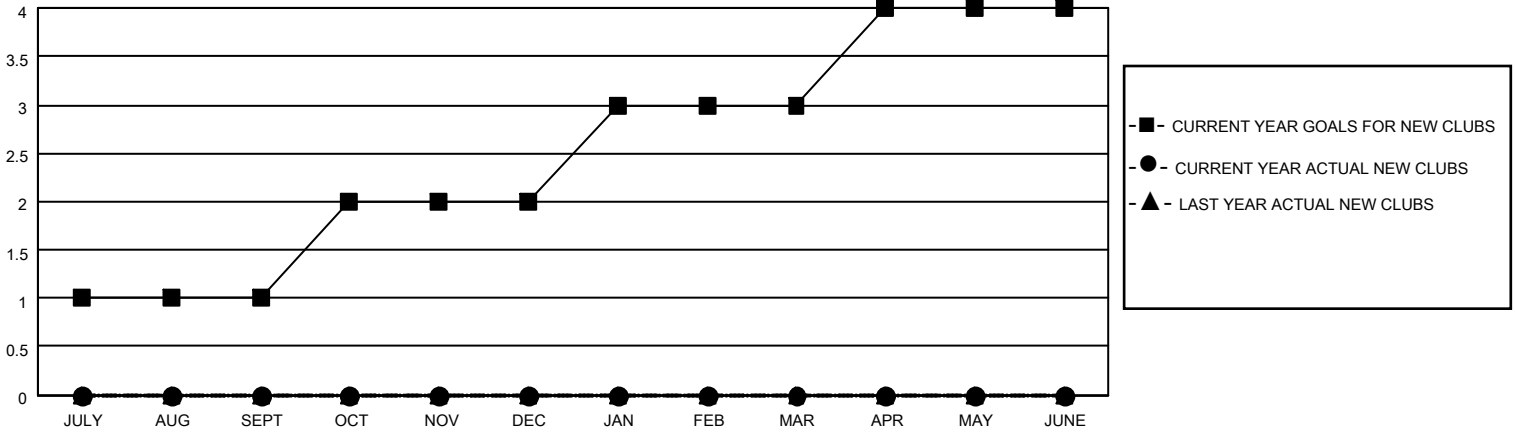
District 27 B1

Results as of: 11/30/2020

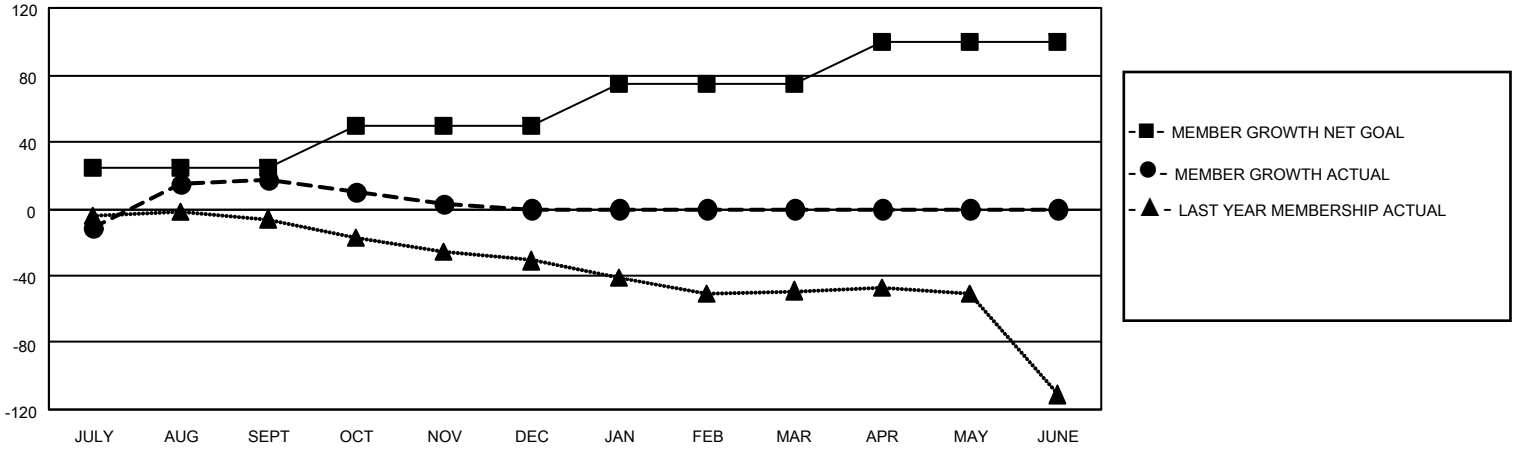
Clubs			
RESULTS FOR 2020-2021			
QUARTER	NEW CLUB GOAL	NEW CLUBS	DROPPED CLUBS
JULY/AUG/SEPT	1	0	1
OCT/NOV/DEC	1	0	0
JAN/FEB/MAR	1	0	0
APR/MAY/JUNE	1	0	0

Members			
RESULTS FOR 2020-2021			
QUARTER	MEMBER GROWTH NET GOAL	MEMBER GROWTH ACTUAL	DROPPED MEMBERS ACTUAL (including transfers)
JULY/AUG/SEPT	25	72	41
OCT/NOV/DEC	25	13	27
JAN/FEB/MAR	25	0	0
APR/MAY/JUNE	25	0	0

**GOALS AND ACTUAL NEW CLUBS CUMULATIVE**



**GOALS AND ACTUAL MEMBERS CUMULATIVE**



DROPPED CLUBS: 1	21 CLUBS OF 64 ADDED 1 OR MORE NEW MEMBERS	<u>GENDER DISTRIBUTION</u>
<u>DROPPED MEMBERS</u>	<a href="#">CLICK HERE FOR CUMULATIVE MEMBERSHIP DATA</a>	MALE 1,403 (75.15%)
DECEASED 20		FEMALE 464 (24.85%)
CLUB CANCELLED 0		TOTAL FAMILY UNIT MEMBERS 361
OTHER 48		FAMILY MEMBERS PAYING HALF DUES 184
<b>TOTAL 68</b>		